

2025
11th
ANNUAL

Annual Updates in
Kidney Transplantation

June 18, 2025

7:30am – 3:30pm



A live, hybrid conference!

- Hillsdale Conference Center
550 Hillsdale Drive, Charlottesville, VA, 22901
- Virtually through Zoom



UVA Health

UVA Health Continuing Education



Educating dialysis unit and transplant staff is essential in the care of patients with end-stage renal disease pursuing kidney transplantation. Dialysis staff help stabilize patients by managing complications that could affect transplant eligibility, while transplant staff assess readiness and address medical and psychosocial factors. Coordinating education ensures both teams understand the patient's history and needs, leading to personalized care and better outcomes. This collaboration improves patient education, reduces transplant risks and enhances the transition from dialysis to transplantation. This ultimately increases the likelihood of a successful transplant and long-term graft and patient survival.

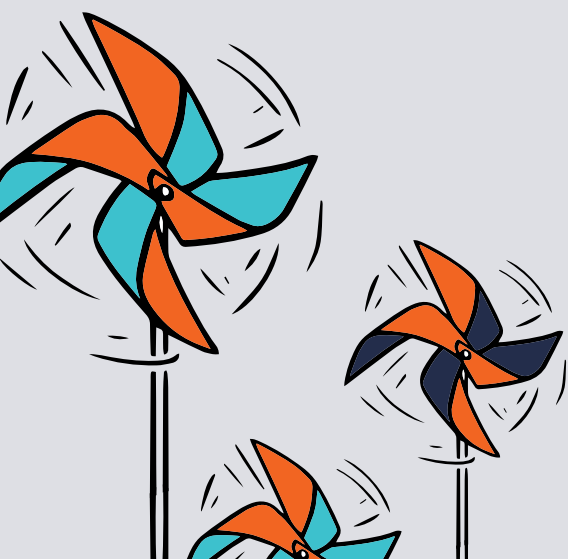
This conference will address:

- ways the understanding of a patient's spiritual beliefs can assist the team in guiding a kidney transplant candidate through their evaluation
- strategies for encouraging patients to discuss their reluctance to consider transplant
- patient education about Living Donation as their best option for successful kidney transplant
- managing post-transplant diabetes
- managing post-transplant weight gain
- multi-organ transplant as an option for patients with ESRD
- evaluating patients being considered for kidney transplant
- navigating delayed graft function
- matching immunosuppressive regimens to particular patients
- potential complications with patients considering kidney transplant

DESIRED OUTCOMES

At the conclusion of this activity, learners will be able to

1. Discuss how a patient's spirituality may impact their ability to accept a kidney transplant and how the transplant team can address potential barriers.
2. Describe how motivational interviewing can be utilized to help patients achieve their transplant goals.
3. Identify best practice to encourage weight loss for patients who struggle to meet BMI criteria enabling them to be active on the kidney transplant wait list.
4. Describe management of post-transplant diabetes for patients who have undergone kidney transplant.
5. Discuss post-operative complications of kidney transplant and most common reasons for readmission after kidney transplant.
6. Discuss multi-organ transplant, the timing of such surgeries, and which patients benefit from this approach.
7. Review anti-rejection treatment regimens that include monthly Belatacept and which patients are best suited to this immunosuppressive medication.
8. Describe the process of evaluating a patient for kidney transplant and how critical this thorough testing is to outcomes after transplant.
9. Discuss delayed graft function and its impact on a kidney transplant recipient, their family, and dialysis unit staff.



AGENDA

7:30 AM	Check-In, Breakfast (provided for in-person participants), and Exhibitors
7:55 AM	Welcome — Barb Shephard, BSN, RN, CCTC
8:00 AM	Living Donor First — Anita Sites, RN, MSN, AG-ACNP-BC, CCTC
8:30 AM	Pre-Transplant Evaluation Testing — Emma Johnstone, RN
9:00 AM	Motivational Interviewing — Alexander Larson, MSW, LCSW
9:30 AM	Break and Exhibitors
9:45 AM	Multi-Organ Transplant — Alden Doyle, MD, MS, MPH, FAST
10:30 AM	Patient Panel — Anita Sites, RN, MSN, AG-ACNP-BC, CCTC, Moderator
11:15 AM	Spiritual Barriers to Transplant — Seth McElroy, MSN, RN, CNL, CNOR
11:45 AM	Updates on Belatacept — Sarthak Virmani, MBBS
12:15 PM	Lunch (provided for in-person participants) and Exhibitors
1:00 PM	Post-Transplant Complications — Carol Vincel, MSN, RN
1:30 PM	Delayed Graft Function — Joseph Leeds, MD, MS, MPH, FAST
2:00 PM	Break and Exhibitors
2:15 PM	Post-Transplant Diabetes Mellitus — Meaghan M. Stumpf, MD
2:45 PM	Nutrition & Weight Loss — Mallory Foster, RD, CNSC, CCTD
3:15 PM	Pop Quiz Recap — Barb Shephard, BSN, RN, CCTC
3:30 PM	Evaluate and Adjourn

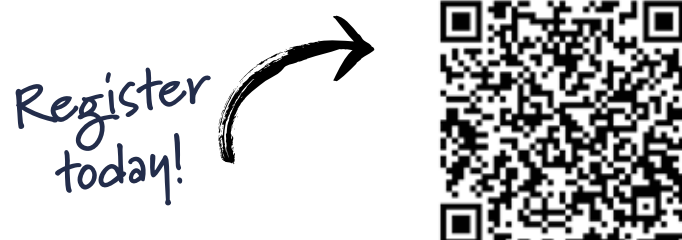
REGISTRATION

Scan the QR code below or navigate to uva.cloud-cme.com and select this conference from the Upcoming Courses list. *Registration will close at midnight on Thursday, June 12, 2025.* The course syllabus will be available online the week of the conference until 30 days after the conference.

PLEASE NOTE: Policies on cancellation, payment methods, and accommodation requests can be found on our conference website.

	Early Bird Rate through June 1, 2025	Rate June 2-12, 2025
Healthcare Provider	\$80	\$95
Resident/Fellow/Student	\$65	\$80

Please choose your registration category carefully. You will not be able to change from virtual to in-person registration (please note the refund policy on our website).



COURSE FACULTY & PLANNING COMMITTEE

Unless otherwise noted, all faculty and planning committee members are from the University of Virginia.

Alyssa Briske, RDN, Transplant Dietician*

Alden Doyle, MD, MS, MPH, FAST, Quality Director of Transplant

Mallory Foster, RD, CNSC, CCTD, Transplant Dietician*

Emma Johnstone, RN, Transplant Coordinator, Abdominal Transplant*

Jeanne Kamal, MD, Transplant Nephrologist*

Alexander Larson, MSW, LCSW, Clinical Social Worker, UVA Transplant Program*

Joseph Leeds, MD, MS, MPH, FAST, Assistant Professor of Medicine, Division of Nephrology*

Seth McElroy, MSN, RN, CNL, CNOR, Renal Transplant Outreach Coordinator*

Angie Nishio-Lucar, MD, Associate Professor of Medicine; Program Director, Transplant Nephrology Fellowship; Medical Director, Living Kidney Donor Program*

Christina Papageorge, MD, Assistant Professor of Surgery*

Swati Rao, MD, Transplant Nephrologist*

Anthony Reed, Biomedical Technician and Patient Ambassador*

Barbara Shephard, BSN, RN, CCTC, Transplant Outreach Manager; Course Director*

Anita Sites, RN, MSN, AG-ACNP-BC, CCTC, Living Donor Transplant Coordinator*

Meaghan M. Stumpf, MD, Endocrinology*

Carol Vincel, MSN, RN, Nurse Practitioner*

Sarthak Virmani, MBBS, Assistant Professor of Medicine, Division of Nephrology*

Linda Hanson, MSM, Continuing Education Program Manager

*Planning Committee Member

CONTACT INFORMATION

Linda Hanson, MSM

Program Manager,

School of Nursing Continuing Education

llh3x@virginia.edu

434-982-4136

Accreditation & Designation Statement



JOINTLY ACCREDITED PROVIDER™
INTERPROFESSIONAL CONTINUING EDUCATION

In support of improving patient care, UVA Health Continuing Education is jointly accredited by the Accreditation Council for Continuing Medical Education (ACCME), the Accreditation Council for Pharmacy Education (ACPE), and the American Nurses Credentialing Center (ANCC), to provide continuing education for the healthcare team.

IPCE Credits



IPCE CREDIT™

This activity was planned by and for the healthcare team, and learners will receive **6.0 Interprofessional Continuing Education (IPCE) credit** for learning and change.

Nurses

UVA Health Continuing Education awards **6.0 contact hours** to a nurse who participates in this educational activity and completes the post activity evaluation.

Social Workers



As a Jointly Accredited Organization, UVA Health Continuing Education is approved to offer social work continuing education by the Association of Social Work Boards (ASWB) Approved Continuing Education (ACE) program. Organizations, not individual courses, are approved under this program. Regulatory boards are the final authority on courses accepted for continuing education credit. Social workers completing this course receive **6.0** general continuing education credits.

CEPTC Credit

As a designated Approved Provider by the American Board for Transplant Certification (ABTC), University of Virginia Charles O. Strickler Transplant Center grants up to **6.0 Category 1 Continuing Education Points for Transplant Certification (CEPTCs)** for this offering.
CODE: 162-163

Dietitians



Completion of this RD/DTR profession-specific or IPCE activity awards CPEUs (One IPCE credit=One CPEU).

If the activity is dietetics-related but not targeted to RDs or DTRs, CPEUs may be claimed which are commensurate with participation in contact hours (One 60 minute hour=1 CPEU).

RD's and DTRs are to select activity type 102 in their Activity Log. Performance Indicator selection is at the learner's discretion.

Hours of Participation

UVA Health Continuing Education awards **6.0 hours of participation** (consistent with the designated number of *AMA PRA Category 1 Credit(s)™* or ANCC contact hours) to a participant who successfully completes this educational activity.

UVA Health Continuing Education maintains a record of participation for six (6) years.



DIRECTIONS to the Hillsdale Conference Center

Hillsdale Conference Center...
550 Hillsdale Drive,
Charlottesville, VA 22901
...is 3 miles from UVA's Central Grounds.
Ample parking is available on site.

- Follow Route 29 to Charlottesville
- Turn onto Branchlands Boulevard
- Turn Right onto Hillsdale Drive
- In 4/10 mile Hillsdale Conference Center will be on your Right.